



TC
Thompson
Controls

AWARENESS IN THE WORK PLACE

ELECTROCUTION



WHY

- **WE ARE INITIATING THIS SAFETY AWARENESS FOR POSSIBLE ELECTRICAL HAZARDS DUE TO THE NEAR MISS WHICH OCCURRED AT ONE OF OUR SITES**

WORKER HAD A SHOCK FROM BRUSHING PAST AN EXISTING METAL JUNCTION BOX

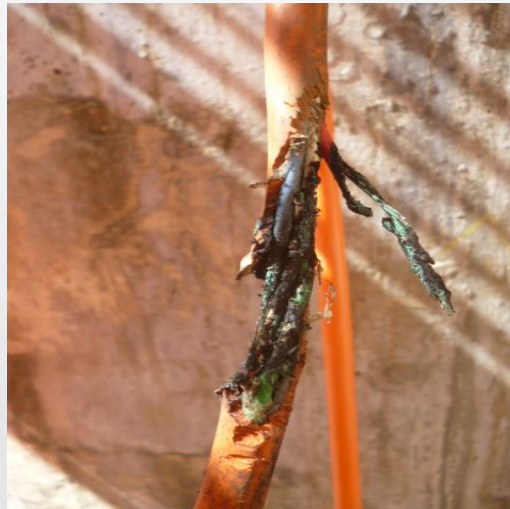
PURPOSE

- **THOMPSON CONTROLS ARE PRO-ACTIVE TO ENSURE THAT YOUR SAFETY IS OUR NUMBER ONE PRIORITY**
- **WE ALL GO HOME SAFELY**

WHAT TO LOOK FOR: VISUAL CHECKING

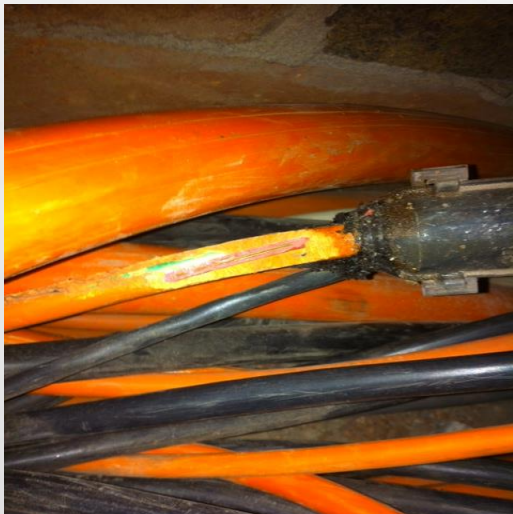


Unterminated Cables

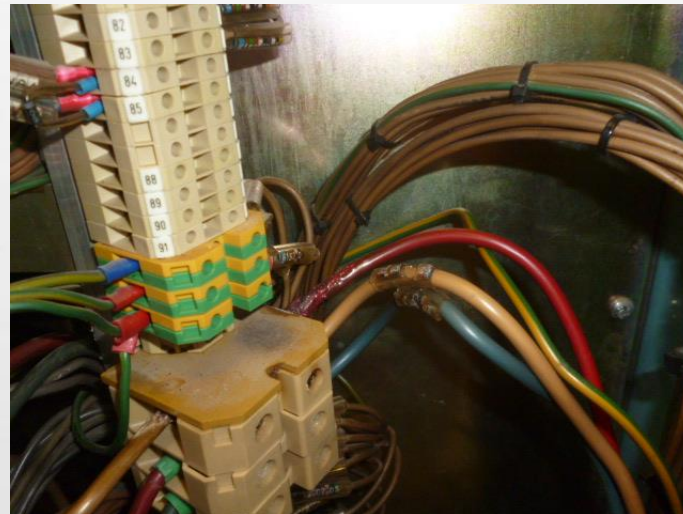


Rat Chewed Cable

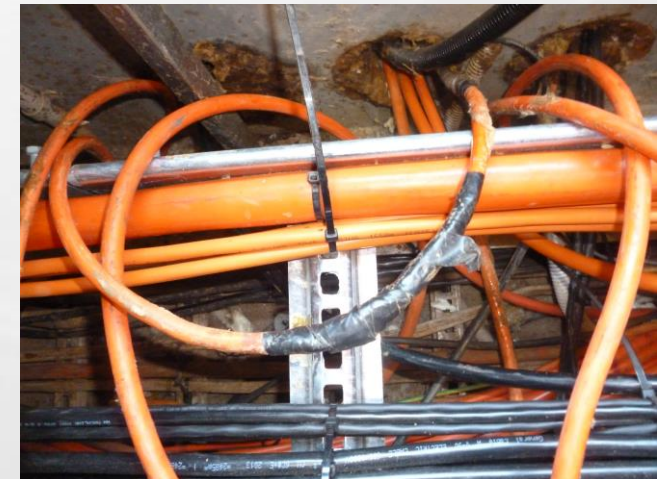
VISUAL CHECKING



**Rat chewed cable-
exposed conductor**



**Excess heat melting
cables**



**“The unknown” hiding
under the tape**

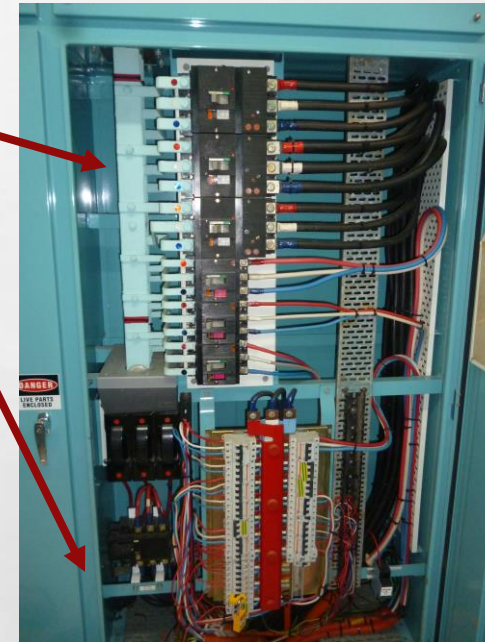
VISUAL CHECKING



Live Busbars



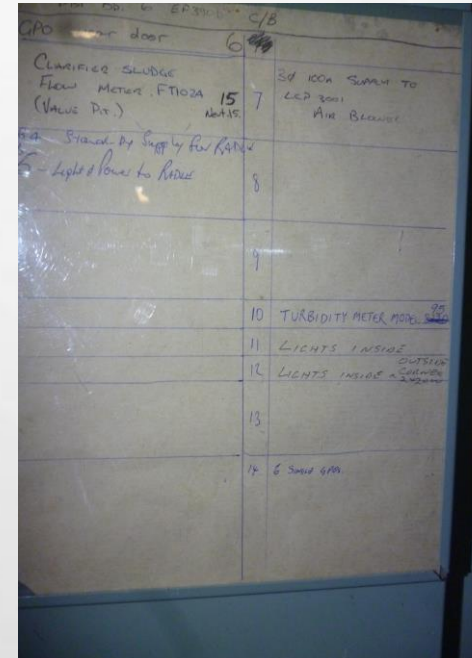
Live



VISUAL CHECKING



16 circuit breakers in this board

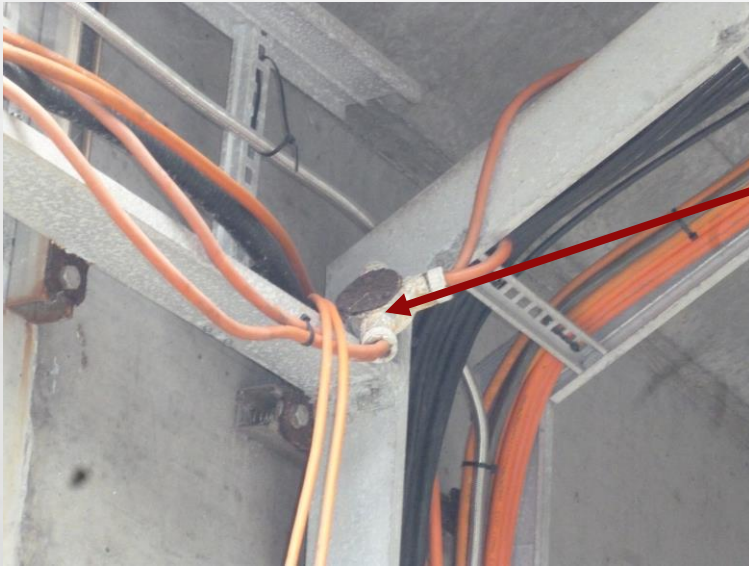


This board legend has 10 items registered – with 16 in use.

So.... Question

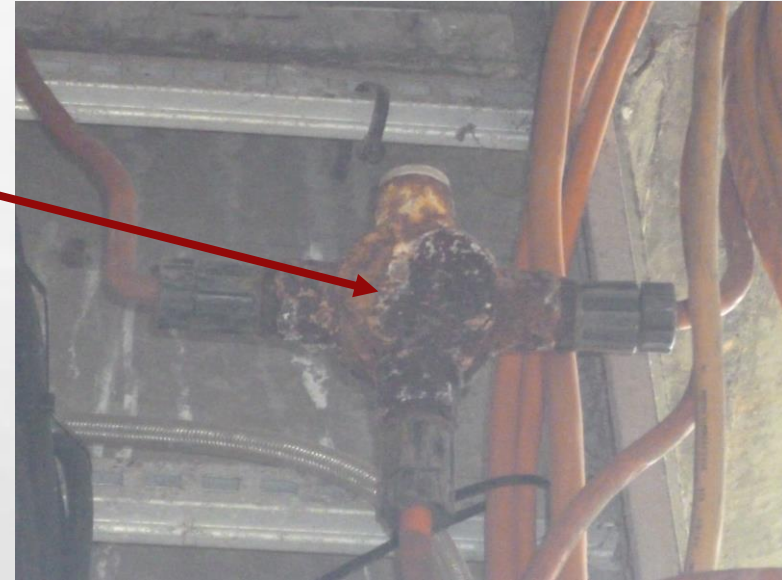
What about the other 6??

VISUAL CHECKING



Unmounted –Hanging

Metal J-Box



VISUAL CHECKING



**Exposed cables – terminals –
potential “live”**



Exposed cables

Q & A – WHAT TO DO

- **WHAT WOULD YOU DO IF YOU LOCATED AN UNSAFE CABLE, HAND-STATION, J-BOX OR SIMILAR?**
- **WHO WOULD YOU REPORT IT TO?**
- **HOW WOULD YOU CHECK FOR VOLTAGE AND MAKE SAFE?**